



## HotPort™ Indoor Wireless Mesh Nodes



HotPort™ 3101



HotPort™ 3103



**HotPort™ 3100 Series Indoor Mesh Nodes**  
HotPort 3100 series mesh nodes provide Ethernet connectivity at any indoor location over a high-performance, self-forming wireless mesh backbone. Each node has a UL2043 plenum-rated enclosure and a built-in 4-port 10/100 Mbps Ethernet switch for connecting standard network devices or other networks to the wireless mesh.

Both models can operate at 2.4 GHz for maximum range and penetration, or at 5 GHz to minimize interference from other wireless devices. The HotPort 3101 provides 10 Mbps throughput and is a cost-effective solution for Wi-Fi HotZones. The HotPort 3103 provides 25 Mbps throughput plus traffic prioritization to provide maximum performance for video, voice, and data.

**HotPort High Performance Mesh Network**  
Firetide HotPort mesh nodes automatically connect to each other to create a HotPort high performance wireless mesh network. Designed for maximum performance, scalability and ease of use, the HotPort mesh network operates seamlessly indoors and outdoors, making it ideal for campus and metropolitan area networks. Firetide's AutoMesh™ protocol provides highly

efficient communication among nodes and the network's self-forming and self-healing properties enable rapid deployment and dependable operation. Additional features include support for Virtual LANs, class of service traffic prioritization (HotPort 3103 only), strong encryption and access control for robust security, Dynamic Frequency Selection (DFS) to minimize radio/radar interference, and more.

### Automatic Node Deployment

Upon power up, the AutoMesh protocol automatically discovers and incorporates the node into the mesh network. Multiple, redundant paths add resiliency and allow the mesh to work around disabled links or line-of-sight obstructions.

### Connecting Network Devices

The 4-port Ethernet switch can be used to connect access points, video surveillance cameras, or other devices equipped with an Ethernet interface. Network devices require no reconfiguration or special software to operate over a HotPort wireless mesh.

### Connecting Other Networks

Any HotPort node can also be used for internetworking. Operating as a Network

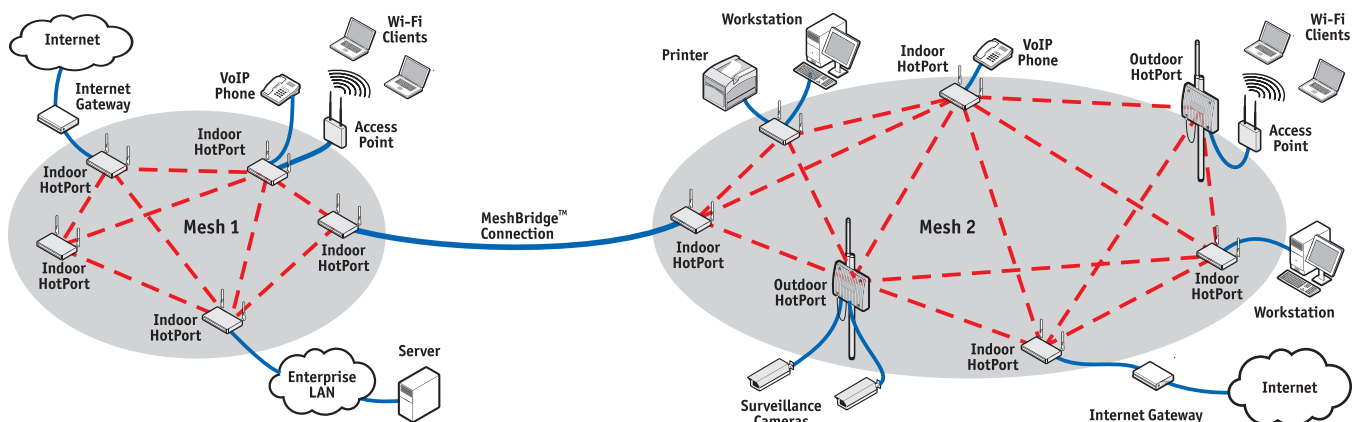
Gateway Interconnect (NGI), a node can connect directly to another network, such as an enterprise LAN/WAN or the Internet. The MeshBridge™ feature included with the optional HotView Pro™ software, also enables internetworking among two or more HotPort mesh networks.

### Mounting and Antenna Options

An optional mounting kit is available for securing the unit to a wall or ceiling. The detachable omni-directional antennas can be replaced with other antennas if directional control is needed for longer range or to minimize wireless interference.

### HotView™ Mesh Management Software

Each HotPort mesh node includes Firetide's HotView management software for basic mesh configuration, monitoring and management. The optional HotView Pro mesh management software provides additional control for multiple mesh networks and larger mesh environments such as enterprise, metropolitan, and campus networks. The MeshBridge feature allows multiple mesh networks on different radio spectrums and channels to form a single LAN or WAN environment with up to 1,000 mesh nodes.



## HotPort™ Indoor Wireless Mesh Nodes



## Specifications

### Models

- HotPort 3101
- HotPort 3103

### Mesh protocol

- FireTide AutoMesh™ protocol

### Traffic prioritization

- Class of Service (HotPort 3103 only)

### Encryption

- 40 bit, 104 bit WEP keys
- 128 bit, 256 bit AES keys

### Wireless interface

- Dual band 2.4 GHz and 5 GHz  
(channel availability subject to country-specific regulatory approvals)
  - 2.400—2.497 GHz
  - 4.900—5.000 GHz (Japan only\*)
  - 5.150—5.250 GHz
  - 5.250—5.350 GHz
  - 5.470—5.725 GHz (Europe, ETSI)
  - 5.725—5.850 GHz
- Tx Power: up to 1 W EIRP
- Dynamic Frequency Selection (DFS)
- Transmit Power Control (TPC)
- Receive sensitivity
  - 2.4 GHz, DSSS
    - 1 Mbps: -96 dBm
    - 11 Mbps: -89 dBm
  - 2.4 GHz, OFDM
    - 6 Mbps: -93 dBm
    - 54 Mbps: -75 dBm
  - 5 GHz, OFDM
    - 6 Mbps: -92 dBm
    - 54 Mbps: -72 dBm

### Antennas

- Two 2.4 GHz and two 5 GHz antennas provided with each unit
- Pattern: Omni directional, vertical polarization
- Connectors: SMA, reverse polarity
- Length: 6.25 in. (15.5 cm)
- Range: Approx. 1,000 feet (300 meters) open environment
- Gain: up to 5 dBi

### Network ports

- Four 10/100 Base-T (RJ-45) ports
  - IEEE 802.3, 802.3u compliant
- CSMA/CD 10/100 autosense

### Enclosure

- System indicator LEDs (power, status, mesh, fault)
- Ethernet indicator LEDs (link status, activity)
- Two antenna connectors: SMA, reverse polarity
- Power connector
- Four Ethernet data connectors (RJ-45)
- Reset button (recessed)
- Security slot for physical locking device
- Weight: 2.1 lbs (.95 Kg) without external transformer
- Dimensions: 22.85 cm x 14.83cm x 2.71cm

### Power

- Input voltage: 5 VDC @ 1.25 A
- External power supply: 100-240 VAC, 50/60 Hz (External power supply voltage range varies depending on country of operation)

- Power consumption: 7-9 W, depending upon configuration

### Regulatory agency certifications

- Plenum rated UL2043
- Contact your FireTide dealer for product availability and certifications for your country

### Environmental specifications

- Operating temperature: 0° C to +50° C
- Storage temperature: -20° C to +70° C
- Humidity (non-condensing): 10% to 90%
- Storage humidity (non-condensing): 10% to 90%

### Accessories

- Mounting kit for secure wall, ceiling, table-top, or cubicle installation (not included)

### Additional tested and approved antennas

- 8.5 dBi 60° panel, 2.4 GHz

### Mesh management software

- HotView™ mesh management software (bundled)
- HotView Pro™ mesh management software (optional)

### Warranty

- One year limited warranty (see warranty card for details)

## Other FireTide Mesh Products



HotPort Outdoor Mesh Nodes



HotView™ and HotView Pro™ Mesh Management Software



HotPort 4.9 GHz Public Safety Mesh Network



Antennas and Accessories

[www.firetide.com](http://www.firetide.com)



16795 Lark Avenue, Suite 200  
Los Gatos, CA 95032  
Phone: +1 408-399-7771  
Fax: +1 408-399-7756  
Email: [info@firetide.com](mailto:info@firetide.com)

\*4.9 GHz (unlicensed operation approved for Japan only. 4.9 GHz (licensed) public safety operation approved for USA only.

© 2005 FireTide, Inc. All rights reserved. Information subject to change without notice. FireTide, Instant Mesh Networks, HotPort, HotView, HotView Pro, MeshBridge, and AutoMesh are trademarks of FireTide, Inc. DSIN00001 1005