



Backup & Instant Recovery Expert

• Smart • Simple • Speedy

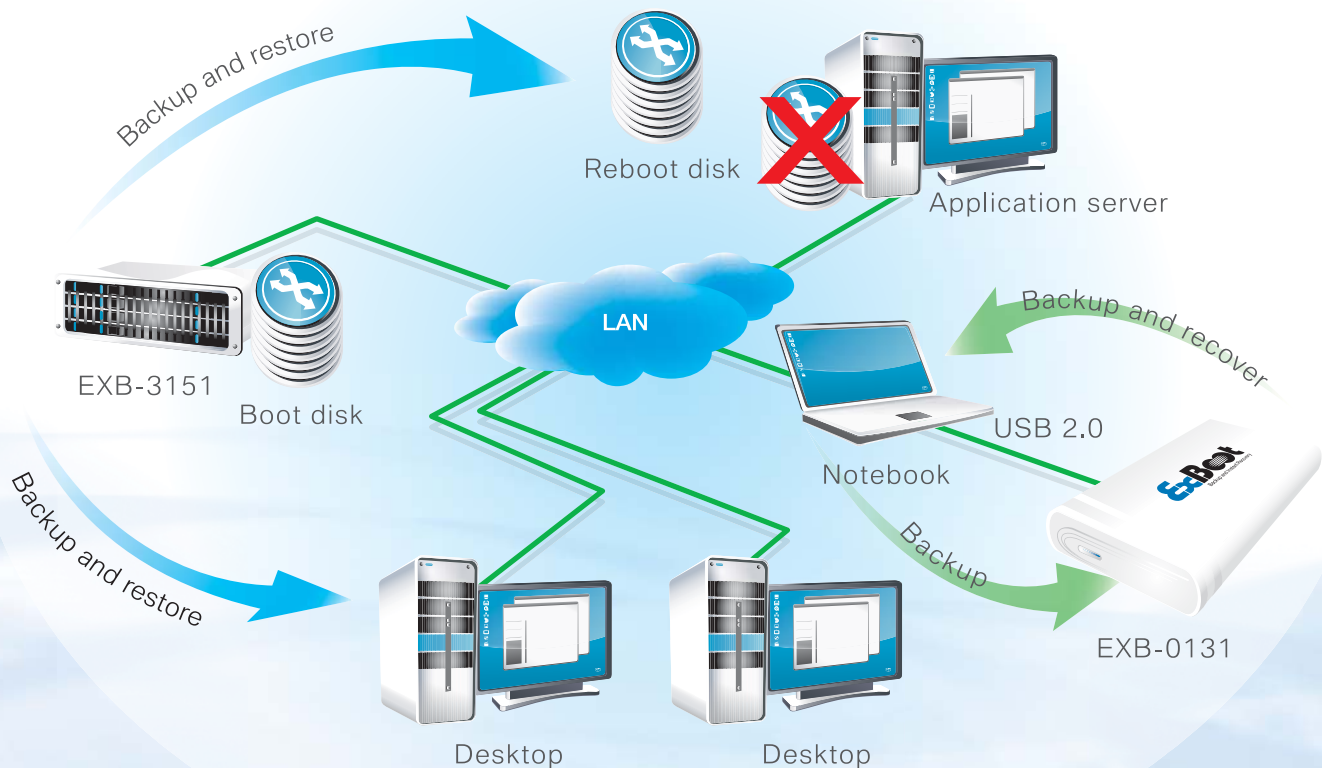
ExBoot - Backup and Instant Recovery Expert

ExBoot, the automated and easy-to-use backup and instant recovery software, is specifically designed for use in SMB businesses, workgroups in large enterprises, and SOHOs and home users. It ensures complete and multiple protection for your data and operating system. It avoids traditional lengthy reinstallation of the operating system and the frequently tiresome data retrieval from other computers or servers.

Whenever hit by a hard drive failure, accompanied by a USB 2.0 interface or through an Ethernet port to connect to an external storage device, the ExBoot enables a user to boot

directly from the storage unit to replace the failed hard drive. It can entirely facilitate your data and operating system for personal use or for business.

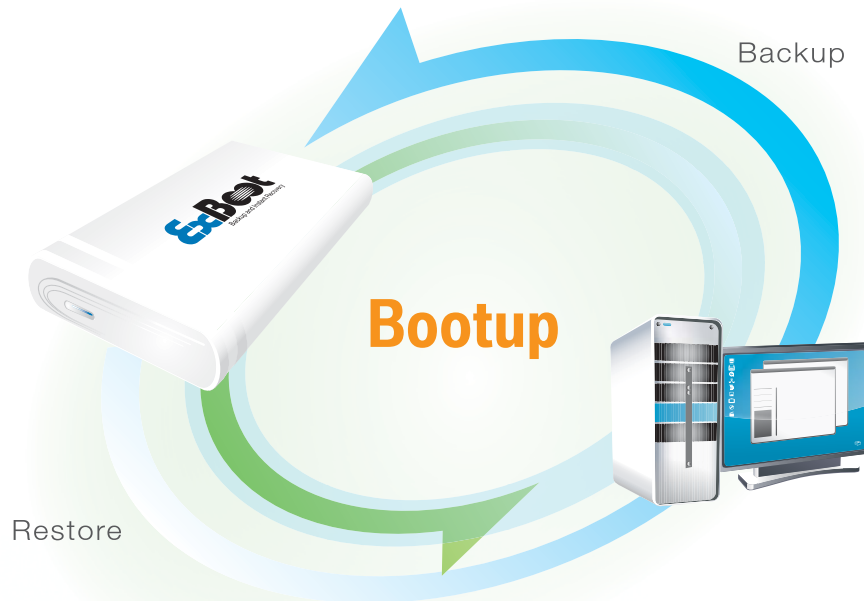
ExBoot provides automated technology for easy administration that allows small businesses and home users to protect their data without requiring extensive IT experience or complicated training procedures. ExBoot takes the headache out of backup!



ExBoot for USB

Designed for easy-to-use backup and instant recovery, ExBoot for USB requires just a few simple steps and all of your operating systems, programs, e-mails, pictures, and other data are backed up and/or restored. It is the perfect backup solution for PC power users and home users who value their data and time.

Your data can be safeguarded by simply pressing one-touch button to launch automated backup software. Then you can replace the failed hard drive by booting directly from an external USB backup drive in the event of hard drive failure or data loss. No more long restoration times or steps to deal with.



• Smart

- ✓ Instant backup of images, O.S., and applications, with multi-volume support
- ✓ Protects a system with scheduled backups

• Simple

- ✓ Plug and play capability allows easy setup
- ✓ Easy one-touch button automatic backup

• Speedy

- ✓ Incremental functionality reduces actual backup time
- ✓ Instant recovery: boot directly from USB



One-touch button backup

Simply back up with just the push of a button



External bootup

Offers a quick recovery by booting up from a USB 2.0 interface storage device

Specifications

Model	EXB-0131	EXB-0121	EXB-0111
Appearance			
Form	3.5" HDD case	2.5" HDD case	1.8" HDD case
Case properties	Aluminum		
Interface	USB2.0/ 480Mbps (Maximum)		
HDD type	IDE		
Incremental versioning	Yes		
Automatic schedule	Yes		
Multiple volumes support	Yes		
External bootup restore	Yes		
Recovery CD restore	Yes		
OS support	Windows® XP Home SP1 / XP Professional SP1 / XP Home SP2 / XP Professional SP2 / 2000 Professional SP4 / 2000 Server SP4 / 2000 Advance Server SP4 / 2003 Server / 2003 Enterprise Server		
Dimensions (mm)	125x35x226	80 x 136 x 16	80 x 96 x 16
Weight (w/o HDD)	600g	100g	80g
Max capacity	600GB	120GB	60GB

ExBoot for USB vs. Backup software vs. General HDD backup drive vs. CD-RW :

	ExBoot for USB	Backup software	HDD backup drive	CD-RW
Boot up	Yes	No	No	No
Scalability	Yes	Yes	Yes	No
Back up the OS and applications	Yes	Yes	No	No
Backup time	Minutes (Incremental backup)	Hours	Hours	Minutes
Downtime to service	Minutes	Hours or days	Hours or days	Minutes or hours
Recovery time	Minutes	Hours or days	Hours or days	Minutes or hours
Easy to use	Yes	No	Yes	Yes
Automatic scheduling backup	Yes	Yes	No	No
Backup verification	Very easy	Difficult	Difficult	Difficult
Use as testing base (for PC/server upgrade)	Very easy	Difficult	Impossible	Impossible
Price	Much affordable	Expensive	Affordable	Much affordable

ExBoot for LAN

The traditional backup and recovery devices are labor-intensive, time-consuming, and not cost-effective as you might imagine. The hours of downtime will result in a significant loss of enterprise productivity. Now, the ExBoot for LAN brings enterprise the simplest way to retrieve all of the client's system back to its previous status anytime.

The appliances with ExBoot software back up the data of designated servers, desktops, or notebooks. It also boots up these machines over an IP network in the event of disasters such as a disk failure, virus attack, software crash, mechanical failure, human error, etc. It greatly reduces potential downtime and greatly improves IT efficiency.

• Simple backup

All the clients' data, operating system components, applications or all the server's settings are backed up by simply one click at the UI or scheduled automatic backup. Even after finishing backup, ExBoot for LAN can be configured to automatically shutdown the client's computer.

• Incremental backup

Save your time and protect your drive by backing up only new and modified files after the first full backup.

• Synchronization

Automatically checks and synchronizes to ensure files are up-to-date.

• External bootup

Offers a quick recovery by following a boot disk failure by rapidly booting the target system over the IP network via the industry standard protocol, PXE.

• Total recovery

Recover the OS, applications and data back to the previous point of time at the same time.



EXB-1021

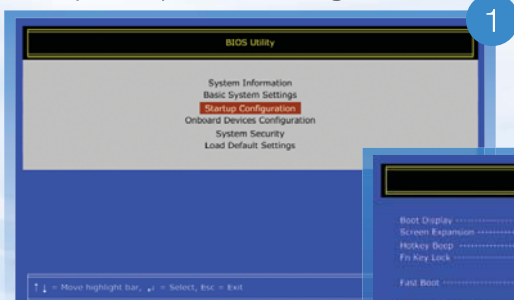


EXB-3151

3 Steps to reboot up your system in a data disaster

Step 1

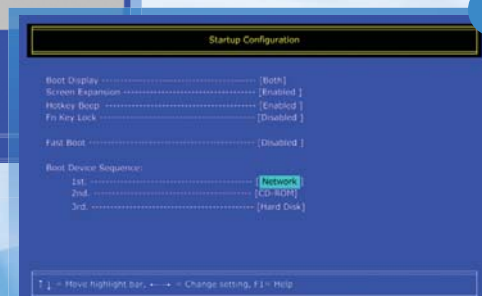
Access your computer's BIOS settings.



1

Step 2

Set "Network" to be the first boot device. Remember that it might appear as "Intel Boot Agent...", "IBA..." or "PXE Agent...". (By default, your computer is probably set to boot from its local hard drive first and possibly a floppy drive or a CD-ROM drive next.)



2





3

Step 3

When you are finished, save your settings and reboot.

Specifications

Model	EXB-1021	EXB-3151
Appearance		
Form factor	1U rackmount	3U rackmount
Max. capacity	1TB	6TB
HDD bay/ type	2 x SATA	15 x SATA
Ethernet	1 Gigabit port	2 Gigabit ports
Client access license	5 and upgradeable	10 and upgradeable
RAID level	0 and 1	0, 1, and 5
Data on-line rebuilding	Yes	
Hot-swappable feature	HDD	HDD, fan and power supply
LED Fault Indicate	HDD	HDD, system, LAN
Environment monitoring	HDD, fan and temperature	HDD, fan temperature and power
Remote fault message	E-mail	E-mail
Open file support	Yes	
External bootup	Yes	
Multiple volumes support	Yes	
Synchronization	Yes	
Automatic schedule	Yes	
Versions	8	32
OS support	Windows® XP Home SP1 / XP Professional SP1 / XP Home SP2 / XP Professional SP2 / 2000 Professional SP4 / 2000 Server SP4 / 2000 Advance Server SP4 / 2003 Server / 2003 Enterprise Server	
Dimensions (mm)	427x44x200	485x132x500
Weight (w/o HDD)	5kg	16kg



FASTORA®

Headquarters

AXIOMTEK Co., Ltd.

8F, No.4, Lane 235, Pao Chiao Rd. Hsin Tien, Taipei, Taiwan
Tel: +886-2-2917-4550
Fax: +886-2-2917-3200
E-mail: info@axiomtek.com.tw

America

AXIOMTEK Inc.

18138 Rowland St., City of Industry, CA91748, USA
Tel: +1-626-581-3232
Fax: +1-626-581-3552
E-mail: info@axiomtek.com

Europe

AXIOMTEK Deutschland GmbH.

Schneiderstrasse 61, 40764 Langenfeld, Germany
Tel: +49-2173-399360
Fax: +49-2173-3993636
E-mail: sales@axiomtek.de

AXIOMTEK S.A.S.

Le Charlebourg 14-30, rue de Mantes 92700 Colombes, France
Tel: +33 (0) 146-491-591
Fax: +33 (0) 146-491-590
E-mail: info@axiomtek.fr

China

Shanghai Office

20D, Haixing Square, No 1 Ruijin Rd, Shanghai, P.R. China
Tel: +86-21-5496-3090
Fax: +86-21-5496-3091
E-mail: info@axiomtek.net.cn